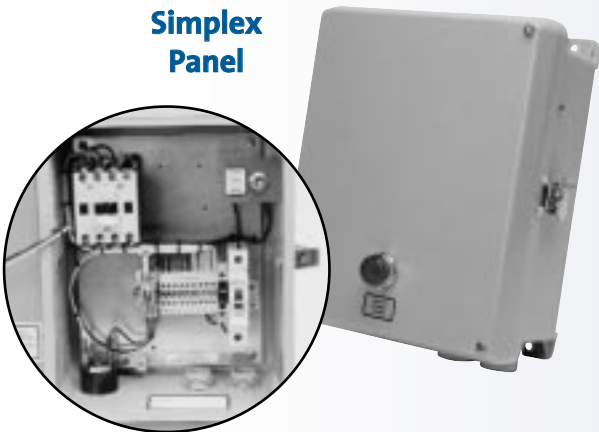


# GRUNDFOS SEWAGE & EFFLUENT PUMP ACCESSORIES



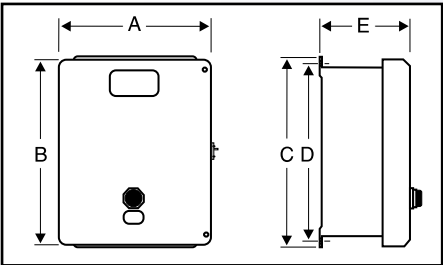
Simplex  
Panel



Standard Features

**LISTING:** Underwriters Laboratories, UL 508.  
**RATINGS:** Model S1 rated up to 120 VAC, 1 Hp, 16 A, Single Phase, 60 Hz. Model S2 rated at 230 VAC, 1½ Hp, 16 A, Single Phase, 60 Hz.  
**MOTOR-START CONTRACTOR:** Rated for 24 FLA, Single Phase, 60 Hz.  
**CURRENT LIMITING CIRCUIT BREAKER:** 20 amp, OFF/ON switch, DIN rail mounting with thermal magnetic tripping characteristics. (Single Pole/120 V; Double Pole/240V)  
**TOGGLE SWITCH:** A SPDT HOA switch with a 10 A 115V/20A 230V motor rating.  
**FUSE DISCONNECT:** 5 amp (10,000 AIC) fuse with DIN rail mount.  
**AUDIBLE ALARM:** Panel mount with a minimum of 80 db sound pressure at 24 inches, warble tone sound.  
**VISUAL ALARM:** NEMA 4-rated, 7/8-inch diameter, red lens, oil-tight with push-to-silence feature.  
**AUDIO-ALARM SILENCE RELAY:** 120 VAC, automatic reset, with DIN rail mount socket base.  
**ALARM CIRCUIT:** 120 VAC, wired separately from pump circuit, so that if the pump's internal overload switch or current-limiting circuit breaker is tripped the alarm system remains functional.  
**ENCLOSURE:** NEMA 4X-rated, fiberglass with hinged cover. Noncorroding. External mounting ears.  
**PADLOCKABLE LATCH:** Constructed of noncorroding stainless steel.

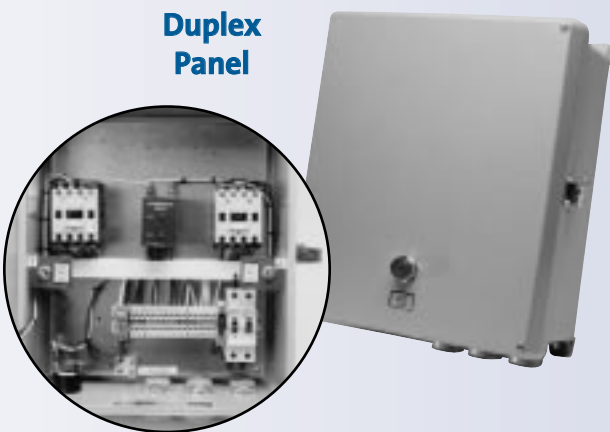
Dimensional  
Drawing



Dimensions

Part Number	Panel Type	Model	Phase	Voltage	Horsepower	A	B	C	D	E
96001032	Simplex	S1	1	115	1/3 - 1	9 5/16	11 5/16	11 1/2	10 3/4	5 1/2
96001040	Simplex	S2	1	230	1/3 - 1 1/2	9 5/16	11 5/16	11 1/2	10 3/4	5 1/2
96001033	Duplex	D1	1	115	1/3 - 1	13 5/16	15 5/16	15 1/2	14 3/4	8 1/4
96001041	Duplex	D2	1	230	1/3 - 1 1/2	13 5/16	15 5/16	15 1/2	14 3/4	8 1/4

Duplex  
Panel



Standard Features

**LISTING:** Underwriters Laboratories, UL 508 Listed.  
**RATINGS:** Model D1 rated up to 120 VAC, 1 Hp, 16 A, Single Phase, 60 Hz. Model D2 rated at 240 VAC, 1½ Hp, 16 A, Single Phase, 60 Hz.  
**MOTOR-START CONTRACTOR:** Rated for 24 FLA, Single Phase, 60 Hz.  
**CURRENT LIMITING CIRCUIT BREAKER:** 20 amp, OFF/ON switch, DIN rail mounting with thermal magnetic tripping characteristics. (Single Pole/120 V; Double Pole/240V)  
**TOGGLE SWITCH:** A SPDT HOA switch with a 20 amp motor rating.  
**FUSE DISCONNECT:** 5 amp (10,000 AIC) fuse with DIN rail mount.  
**DUPLEX ALTERNATOR:** Cross wired style for independent lag pump function.  
**AUDIBLE ALARM:** Panel mount with a minimum of 80 db sound pressure at 24 inches, warble tone sound.  
**VISUAL ALARM:** NEMA 4-rated, 7/8-inch diameter, red lens, oil-tight with push-to-silence feature.  
**AUDIO-ALARM SILENCE RELAY:** 120 VAC, automatic reset, with DIN rail mount socket base.  
**ALARM CIRCUIT:** Wired separately from pump circuit, so that if the pump's internal overload switch or current-limiting circuit breaker is tripped the alarm system remains functional.  
**ENCLOSURE:** NEMA 4X-rated, fiberglass with hinged cover. Noncorroding. External mounting ears.  
**PADLOCKABLE LATCH:** Constructed of noncorroding stainless steel.

Sensor Floats

Part Number	Length
96001030	10'
96001031	20'

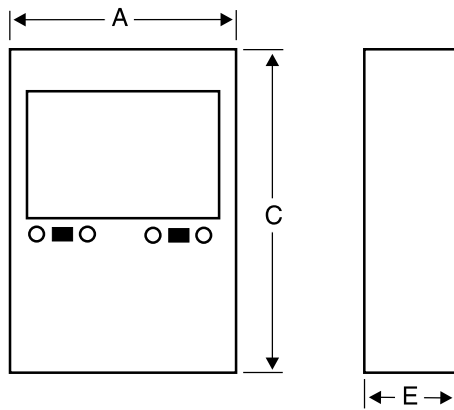
## Tank Alert I



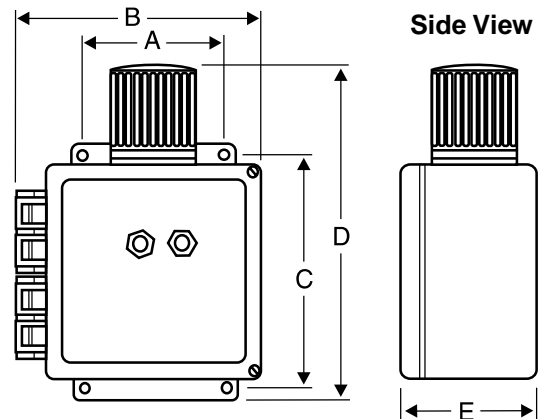
## Tank Alert II



### Dimensional Drawing



### Dimensional Drawing



### Specifications

**MODEL:** Tank Alert I

**ALARM PANEL:** The NEMA 1 metal panel features a red warning light, a green "power on" light, push-to-test alarm button, and a horn silence switch.

**ALARM FLOAT SWITCH:** SJE's Pump Master® Pump/Control Switch.

**SPLICE KIT:** This UL Listed splice kit provides a safe means to make a strong, waterproof splice connection if additional cable length is required.

**VOLTAGE:** Primary 120 V. 60 Hz. Secondary 12 V. 60 Hz.

**WATTS:** 6.5 Watt Alarm Condition.

**ALARM SWITCH CONNECTION TERMINAL:** 1 Amp, 24 V.A.C.

**FLOAT HOUSING:** 3.38 in. diameter x 4.55 in. long, high impact resistant, non-corrosive PVC plastic with internal stabilizing weight. For use in liquids up to 140°F (60°C).

**MECHANICAL TILT SWITCH:** Mechanically-activated, features heavy-duty contacts.

**CABLE:** 15 ft. long, 16 gauge, 2 conductor, SJOW-A water resistant, Neoprene.

### Specifications

**MODEL:** Tank Alert II

**ALARM PANEL:** The NEMA 4X non-corrosive, indoor-outdoor alarm panel features a large, red light, specially designed non-corrosive horn, silence switch (with automatic reset feature) and alarm test switch. Thermoplastic enclosure.

**ALARM FLOAT:** SJE's Pump Master® Pump/Control Switch.

**VOLTAGE:** 120 V.A.C.

**NOTE:** Power to the alarm must be 120 V.A.C. only.

**WATTS:** 40 watts max. (alarm condition).

**AUXILIARY ALARM CONTACTS:** 5 Amps, 120 V.A.C.

**FLOAT HOUSING:** 3.38 in. diameter x 4.55 in. long, high impact resistant, non-corrosive PVC plastic for use in liquids up to 140°F (60°C).

**MECHANICAL TILT SWITCH:** Mechanically-activated, features heavy-duty contacts.

**CABLE:** 20 ft. long, 16 gauge, 2 conductor, SJOW-A water resistant, Neoprene.

### Dimensions

Part Number	Type	A	B	C	D	E
96001042	Tank Alert I	6"	—	4"	—	2½"
96001043	Tank Alert II	4"	7¼"	6¾"	10"	5¼"

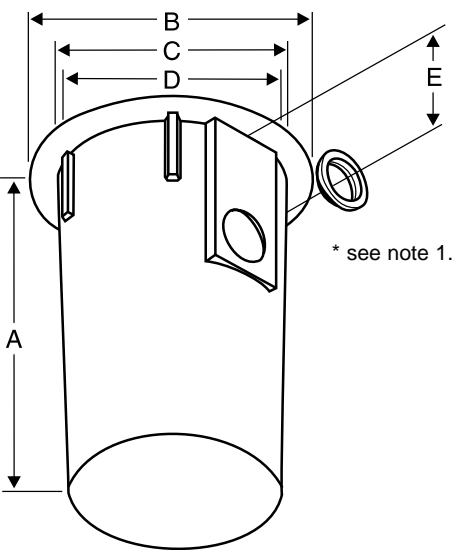
Ejector Basin/Polyethylene



Ejector Basin/Fiberglass

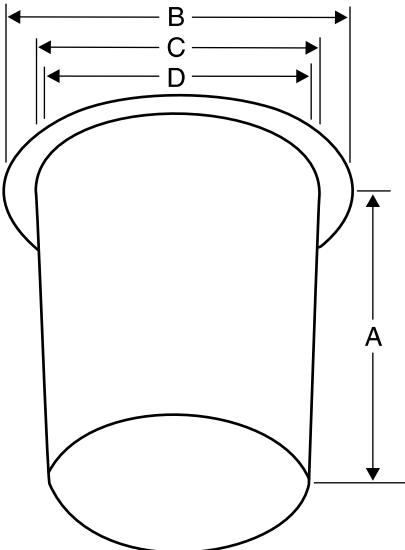


Dimensional Drawing



Polyethylene Basin

Dimensional Drawing



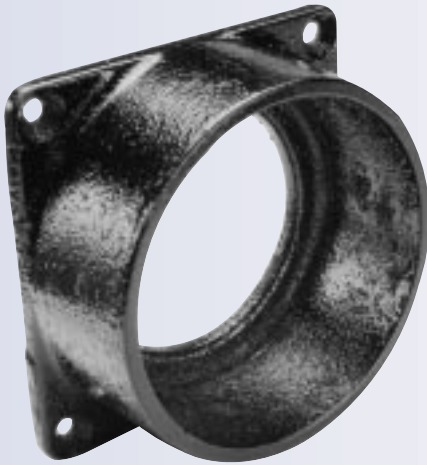
Fiberglass Basin

\*1. 18" and 24" Basin provided with 4" Adapt-A-Flex Fitting.  
2. Fiberglass Basins require that a hole be cut for inlet fitting. See Hubs and Fittings (page 4) for proper hole sizing.

Dimensions

Part Number	Type	Size Diameter x Depth	Capacity	Weight	Wall Thickness	A	B	C	D	E	Materials of Construction
96001004	Ejector Basin	18" x 30"	30 gallons	10½ lbs.	3⁄16"	30"	22"	18⅞"	18"	10½"	Polyethylene
96001005	Ejector Basin	24" x 36"	71 gallons	26 lbs.	1⁄4"	36"	29½"	24½"	24"	10½"	Polyethylene
96001006	Ejector Basin	30" x 36"	110 gallons	35 lbs.	5⁄16"	36"	36½"	30½"	30"	—	Fiberglass
96001007	Ejector Basin	36" x 36"	159 gallons	45 lbs.	5⁄16"	36"	40"	36¾"	36"	—	Fiberglass

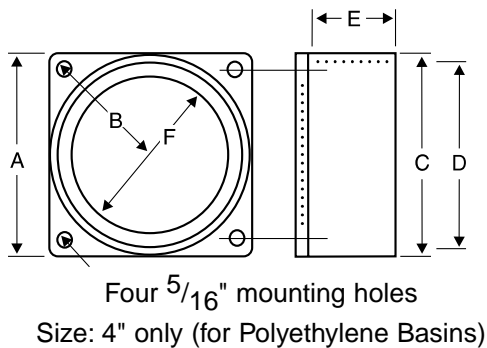
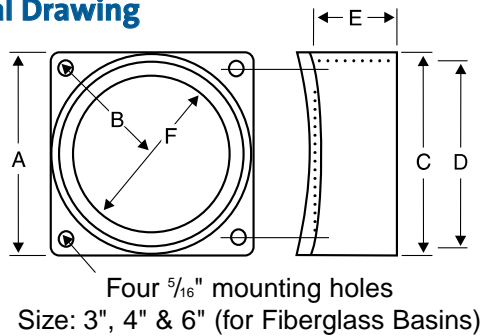
## Caulking Hubs



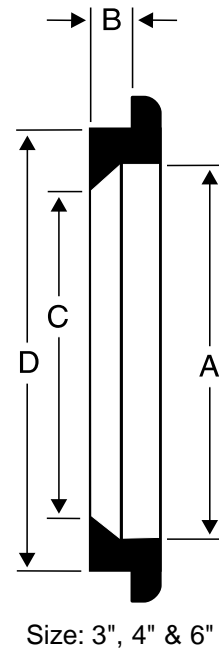
## Adapt-A-Flex Fittings



### Dimensional Drawing



### Dimensional Drawing

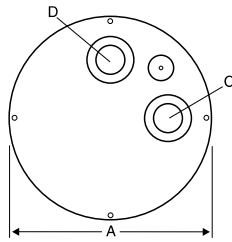


## Dimensions

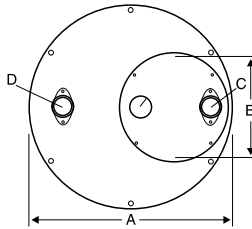
Part Number	Type	Sizes Available	A	B	C	D	E	F	Hole Saw Size
96001507	Hub	3"	4 $\frac{3}{4}$ "	2 $\frac{5}{8}$ "	4 $\frac{5}{8}$ "	4"	2 $\frac{1}{8}$ "	3"	—
96001508	Hub	4"	6"	3 $\frac{3}{8}$ "	5 $\frac{7}{8}$ "	5 $\frac{1}{8}$ "	2 $\frac{1}{4}$ "	4 $\frac{1}{8}$ "	—
96001509	Hub	6"	8"	4 $\frac{5}{8}$ "	7 $\frac{3}{4}$ "	7 $\frac{1}{8}$ "	2 $\frac{1}{4}$ "	6 $\frac{1}{8}$ "	—
96001510	Hub	4"	5 $\frac{3}{4}$ "	3 $\frac{3}{8}$ "	5 $\frac{7}{8}$ "	5	2 $\frac{1}{4}$ "	3 $\frac{3}{4}$ "	—
96001504	Fitting	3"	3 $\frac{15}{32}$ "	$\frac{1}{4}$ "	3 $\frac{1}{8}$ "	4 $\frac{1}{32}$ "	—	—	4"
96001505	Fitting	4"	4 $\frac{15}{32}$ "	$\frac{1}{4}$ "	4 $\frac{1}{8}$ "	5 $\frac{1}{16}$ "	—	—	5"
96001506	Fitting	6"	6 $\frac{23}{32}$ "	$\frac{9}{32}$ "	6 $\frac{13}{32}$ "	7 $\frac{1}{8}$ "	—	—	7"

# GRUNDFOS BASIN COVERS

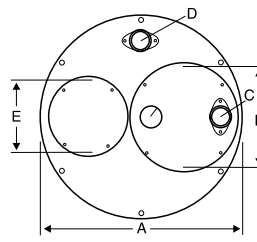
## Dimensional Drawings



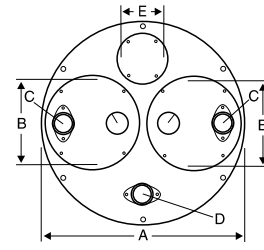
**Simplex**



**Simplex with Pump Access**



**Simplex with Inspection and Pump Access**



**Duplex with Inspection and Pump Access**

## Dimensions

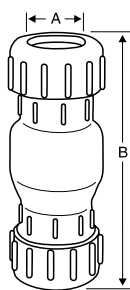
Part Number	Cover Type	Basin Size I.D.	Standard Bolt Circle -Holes	A	B	C	D	E	Cover Thickness	Approx. Wt. (lbs.)	Materials of Const.	Gasket & Bolt Pack
				Cover O.D.	Pump Access I.D.	Discharge Size	Vent Size	Inspection I.D.				
96001008	simplex	18"	19 1/4"-4	20 1/2"	none	2"	2"	none	7 ga.	17	steel	96001010
96001009	simplex	18"	19 1/4"-4	20 1/2"	none	2"	3"	none	7 ga.	17	steel	96001011
96001012	simplex	24"	26 1/2"-6	28"	16"	2"	2"	none	1/4"	48	steel	96001014
96001013	simplex	24"	26 1/2"-6	28"	16"	2"	3"	none	1/4"	48	steel	96001014
96001016	simplex	30"	32 1/2"-6	34"	16"	2"	2"	8"	1/4"	64	steel	96001014
96001017	simplex	30"	32 1/2"-6	34"	16"	2"	3"	8"	1/4"	64	steel	96001014
96001020	duplex	30"	32 1/2"-6	34"	14"	2"	2"	8"	1/4"	66	steel	96001015
96001021	duplex	30"	32 1/2"-6	34"	14"	2"	3"	8"	1/4"	66	steel	96001015
96001024	simplex	36"	38 1/2"-6	40"	16"	2"	2"	8"	1/4"	93	steel	96001014
96001025	simplex	36"	38 1/2"-6	40"	16"	2"	3"	8"	1/4"	93	steel	96001014
96001028	duplex	36"	38 1/2"-6	40"	16"	2"	2"	8"	1/4"	95	steel	96001015
96001029	duplex	36"	38 1/2"-6	40"	16"	2"	3"	8"	1/4"	95	steel	96001015

# GRUNDFOS CHECK VALVES

## Compression



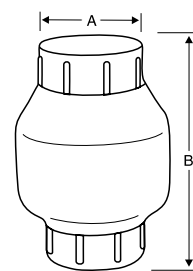
### Dimensional Drawing



## Solvent Weld



### Dimensional Drawing



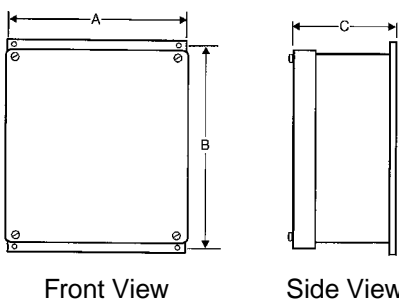
## Dimensions

Part Number	Type	A	B	Box Qty.	Materials of Construction
96001644	Compression	1 1/2"		1	PVC, Buna-N
96001645	Compression	2"		1	PVC, Buna-N
96001048	Compression	1 1/2"	7 1/2"	5	PVC, Buna-N
96001049	Compression	2"	9 3/4"	8	PVC, Buna-N
96001050	Compression	3"	14"	2	PVC, Buna-N
96001046	Solvent Weld	1 1/2"	5 3/4"	12	PVC, Buna-N
96001047	Solvent Weld	2"	6"	12	PVC, Buna-N

# GRUNDFOS JUCTION BOX



## Dimensional Drawing



## Specifications

**MATERIALS:** Lid and box are made from a flame retardant, ultra-violet resistant, reinforced PVC.

**GASKET:** Polyethylene foam.

**SCREWS:** 304 stainless steel.

**ENCLOSURE:** NEMA 4X

## Dimensions

Part Number	A	B	C	Volume (cubic inches)
96001051	6"	6"	4 <sup>3</sup> / <sub>8</sub> "	157

# GRUNDFOS ACCESSORY & REPLACEMENT FLOAT SWITCHES

Switch Model	Description	Cord Length	Approx. Ship. Wt. (lbs./oz.)	Product Number	List Price (\$)
TF-10	Tether Float Switch (for Models SU & EF 25)	10'	2	96001643	34.00
VF-10	Vertical Float Switch (for Model EF25)	10'	2	96001642	41.00
FS-10	Wide Angle Mechanical Float Switch, Piggyback Design, Boxed (for Models KP & AP)	10'	2	ID3799	43.00
FS-25	Wide Angle Mechanical Float Switch Piggyback Design, Boxed (for Models KP & AP)	25'	3	ID3800	47.00

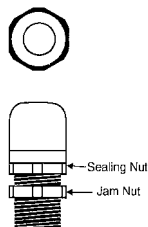
# GRUNDFOS VERTICAL SWITCH

Switch Model	Description	Max. Run Amps	Cord Length	Approx. Ship. Wt. (lbs./oz.)	Product Number	List Price (\$)
VFS	Vertical Float Switch	13	10'	1	96030395	50.00

# GRUNDFOS CORD GRIPS



## Dimensional Drawing



18-3 AWG Wire

## Dimensions

Part Number	Hole/Wire Gauge Requirement	AWG
96001052	1/2" NPT	18-3
96001053	1/2" NPT	16-3

Contact:

L-SE-SL-010	Rev. 05/02
PRINTED IN USA	

**U.S.A.**  
Grundfos Pumps Corporation  
17100 W. 118th Terrace  
Olathe, Kansas 66061  
Telephone: (913) 227-3400  
Fax: (913) 227-3500

[www.grundfos.com](http://www.grundfos.com)

**Canada**  
Grundfos Canada, Inc.  
2941 Brighton Rd.  
Oakville, Ontario L6H 6C9  
Telephone: (905) 829-9533  
Fax: (905) 829-9512

**Mexico**  
Bombas Grundfos de Mexico, S.A. de C.V.  
Boulevard TLC #15, Parque Industrial Stiva Aeropuerto  
C.P. 66600 Apodaca, N.L. Mexico  
Telephone: 011-52-81-8144-4000  
Fax: 011-52-81-8144-4010